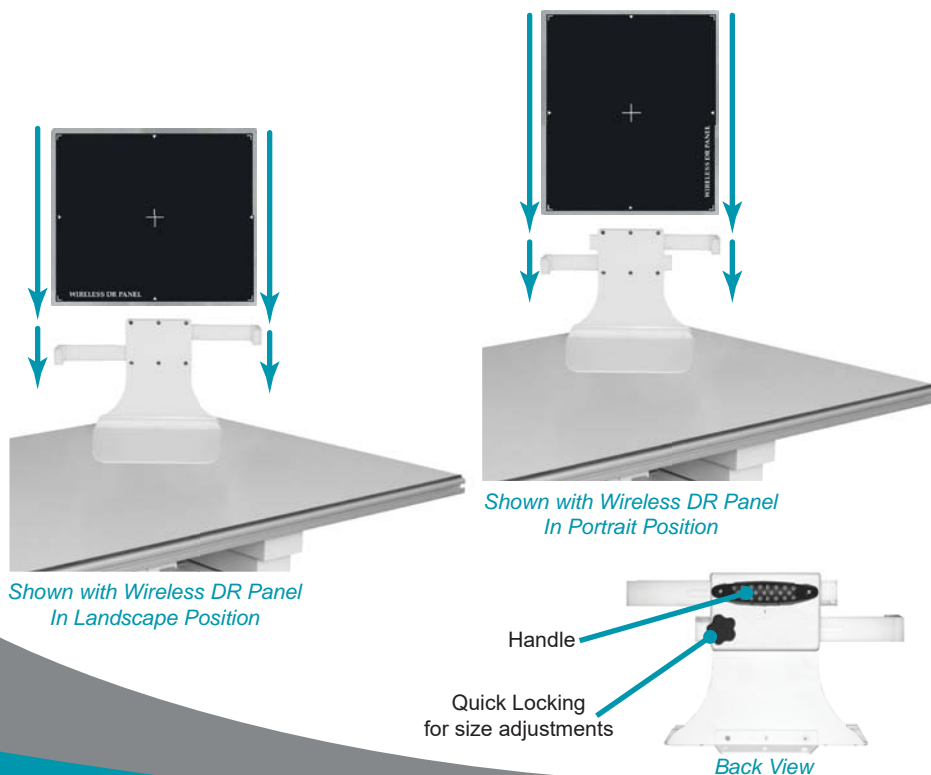
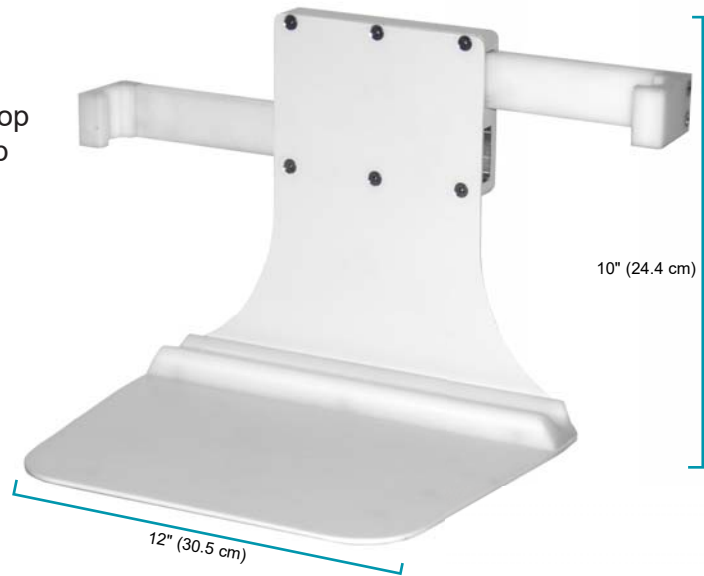


# TABLE TOP CASSETTE HOLDER

The QUEST Table Top Cassette Holder (Q-CHT) is a great accessory to any X-Ray system. It is designed to accommodate portable DR Panels, CR, and Film Cassettes ranges from 7" – 17" (18cm – 43cm), with convenient size adjustment locks which allows for the imaging plates to be positioned either portrait or landscape.

The Table Top Cassette Holder is simply positioned on the table top surface. The base is lined with felt material to protect the table top surface from scratches. The light weight design also provides the ability to optimize positioning quickly and effortlessly while providing an excellent platform for assisting in acquisition of wide range of radiographs.

From Emergency Rooms to Radiographic rooms in Hospitals, Orthopedic Facilities, Clinics and the Private practice, the Table Top Cassette Holder can assist and reduce positioning time which can be critical in certain situations, giving overall better examination results.



## KEY FEATURES

CAT# Q-CHT

### TABLE TOP CASSETTE HOLDER

- Quick and Easy positioning on the X-Ray table
- Accommodates all portable digital (DR) panels up to 17" x 17" (43cm x 43cm)
- Accommodates all CR and/or Film Cassettes up to 17" x 17" (43cm x 43cm)
- Quick locking side adjustments hug the imaging plate in place allowing for the imaging plates to be positioned either horizontally or vertically
- Assists in acquiring cross-table lateral exams, as well as many other specialty views
- Effortless maneuverability with table top scratch protection

*\*Specifications are subject to change*



**Improve Your Positioning For  
Faster & Easier Examinations**

[WWW.QUESTXRAY.COM](http://WWW.QUESTXRAY.COM)

